

***DrayTek***

**ACS-SI**

**Central Management & Monitoring  
for DrayTek CPE**

## Introducing DrayTek ACS-SI

DrayTek ACS-SI is a central management platform intended to manage and monitor estates of DrayTek CPE – routers and access points.

At a glance, you're able to view all of your devices from a single portal, change settings and monitor uptime or problems in real-time. Alarms (which can also be emailed) advise you of any current or previous issues with connectivity (WAN or VPN) and comprehensive reporting enables you to keep an eye on usage across all of your devices.

The ACS-SI server is accessed through your web-browser, so is available to you from anywhere on the web. In the following pages, we show screenshots of some of the main pages. For full details and an in-depth explanation of the features, please contact us.

## At-a-glance device estate with groupings



*You can have unlimited sub-groups, for example,  
Grouped by customer type, company, country etc.*

## Device Admin Screen

**DrayTek** Vi

Essentials Your reliable networking s

**Networks And Devices**

- Network View(7)
  - Bartlett & Co.(0)
  - DrayTek Facilities(2)
    - DrayTek Factory Shanghai
    - DrayTek Factory Taiwan
  - General Customers(0)
  - Michael's Sites(2)
    - Hampstead Town Hall**
    - New York Library
  - SEG Facilities(3)
  - SEG Tech Office(0)

Device ID: 16      Network ID: 8

Model Name: Vigor2830Vn

Device Name: Hampstead Town Hall

Serial number: 00507F7F0000

Note 1: Vigor 2820Vn

Note 2: 1st Floor closet

MAC Address: 00507F7F0000

Location: 51.551199,-0.166255

Emergency phone number: 020 8999 1234

IP: 85.121.85.82      Port: 8069

User Name: vigor

Password: \*\*\*\*\*

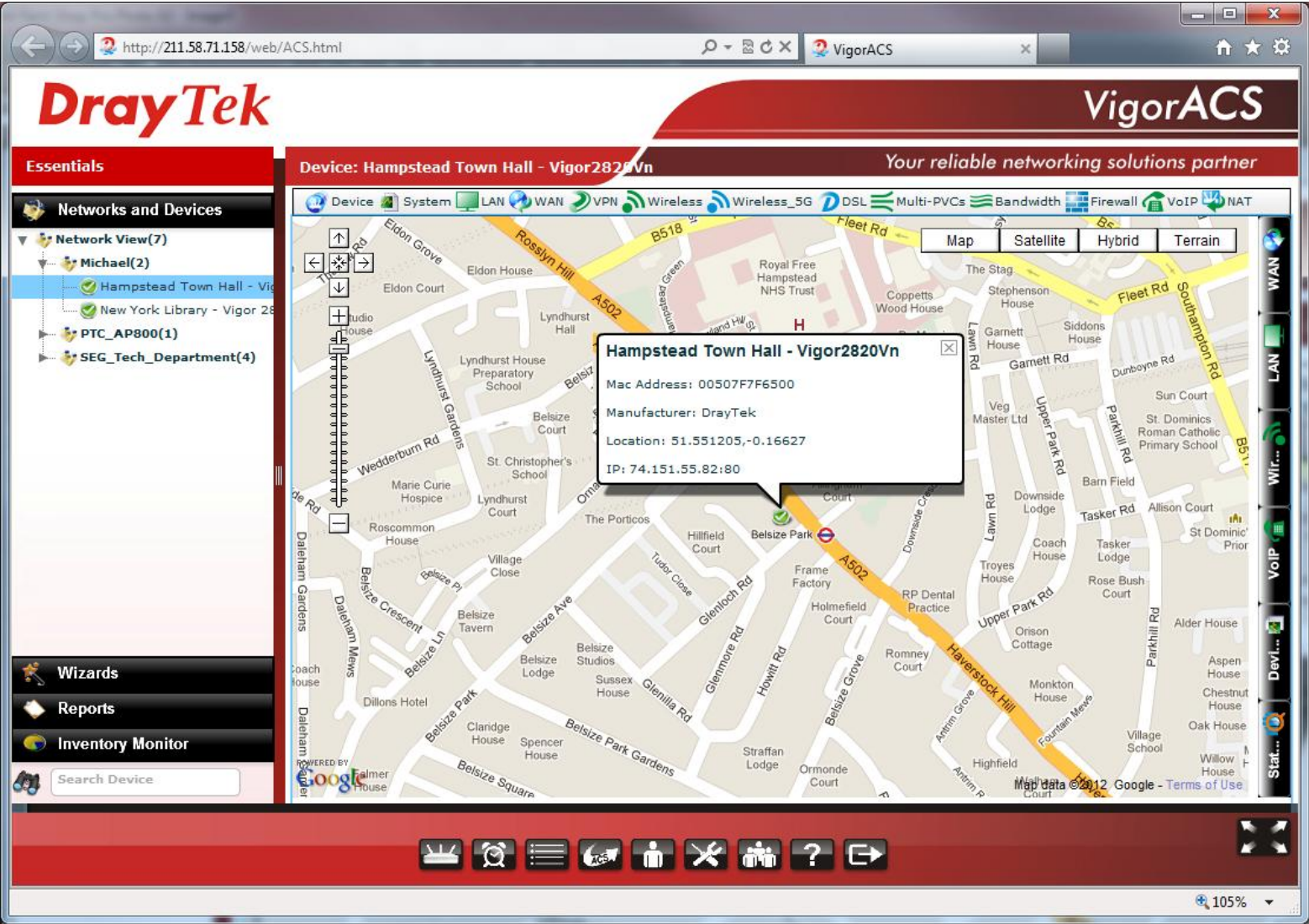
Management Port: 0

Status: **Enable** ▼

Device Type: **Tr069** ▼

Known Device: **Known** ▼

# Integration with Google Maps



# Device View Screen

**DrayTek** **VigorACS**

Essentials Your reliable networking solutions partner

Device: Vigor\_00507F6176E0\_51

Device System LAN WAN VPN Wireless Wireless\_5G DSL Multi-PVCs Bandwidth Firewall VoIP NA

**Networks and Devices**

- Network View(4)
  - SEG\_Tech\_Department(4)
    - PTC\_2820(2)
      - Vigor\_00507F6176E0\_51
      - Vigor\_00507F8B94C8\_52
    - PTC\_2830(1)
      - Vigor\_00507F7CF3B0\_53
    - PTC\_AP800(1)
      - ACS\_800

Wizards

Reports

Inventory Monitor

Search Device

**Device Information**

Status: Normal	UpTime:
Hardware Model: Vigor2820n	CPU:
Firmware Version: 3.3.7_232201	Memory:
Hardware Version: 210	Note 1:
MAC Address: 00507F6176E0	Note 2:
Serial Number:	Web: <a href="http://192.168.15.5">http://192.168.15.5</a>
	Proxy: <a href="http://192.168.15.5">http://192.168.15.5</a>

Location: Borehamwood

---

**Network**

Name	Index	VLAN ID	DHCP	IP
Wan	1			
Wan	2			192.168.15....
Lan	1		true	10.10.10.1

---

**Status**

**Port Status**

Not supported on your device.

**VoIP Status**

Not supported on your device.

---

**Alarm / Note**

100%



# Mass Firmware Upgrade

**DrayTek** **VigorACS**

*Your reliable networking solutions partner*

**Essentials**

- Networks and Devices
- Wizards
- Configuration
  - Backup
  - Restore
- Firmware**
  - Firmware upgrade

**FirmwareUpgradeWizard**

Model name: **Vigor2820n** Modem version: **232201\_A Annex\_A**

File:

Upgrade time:  Now  Schedule

Start day:  Start time(HH:MM):  :

End time(HH:MM):  :

Select devices:

Name	Model name	Firmware version	Modem version	Upgrade
Network View(2)				<input type="checkbox"/>
▶ DrayTek Facilities(0)				<input type="checkbox"/>
▶ Michael's Sites(0)				<input type="checkbox"/>
▼ SEG Facilities(2)				<input type="checkbox"/>
SEG Tech Office	Vigor2820n	3.3.7_232201	232201_A Annex_A	<input checked="" type="checkbox"/>
SEG Tilbury Ware	Vigor2820n	3.3.7_232201	232201_A Annex_A	<input checked="" type="checkbox"/>
▶ SEG_Tech_Departme				<input type="checkbox"/>





# Log Screen

**DrayTek** VigorACS  
Your reliable networking solutions partner

Essentials  
Logs

Device Action

- ActionLog
- RebootLog
- RebootByCPELog
- SetParameterLog
- FileTransferLog
- FirmwareUpgradeWizard
- SettingProfileLog
- DeviceSysLog

System

- SystemLog
- LoginLog
- DeviceOperateLog

UserGroup: RootGroup 1/128

Log ID	Action	Device ID	Device Name	MAC Address	Device IP	Action ID	Time
1948	TransferComplete	6	Vigor_00507F7CF380_53	00507F7CF380	192.168.15.53	56	Fri Mar 2 00:58:23
1947	Inform	6	Vigor_00507F7CF380_53	00507F7CF380	192.168.15.53	609	Fri Mar 2 00:58:23
1946	Upload	6	Vigor_00507F7CF380_53	00507F7CF380	192.168.15.53	223	Fri Mar 2 00:49:37
1945	Upload	6	Vigor_00507F7CF380_53	00507F7CF380	192.168.15.53	222	Fri Mar 2 00:34:34
1944	Upload	6	Vigor_00507F7CF380_53	00507F7CF380	192.168.15.53	221	Fri Mar 2 00:19:31
1943	Upload	6	Vigor_00507F7CF380_53	00507F7CF380	192.168.15.53	220	Fri Mar 2 00:04:28
1942	Upload	6	Vigor_00507F7CF380_53	00507F7CF380	192.168.15.53	219	Thu Mar 1 23:49:25
1941	TransferComplete	3	Vigor_00507F8894C8_52	00507F8894C8	192.168.15.52	55	Thu Mar 1 20:43:17
1940	Inform	3	Vigor_00507F8894C8_52	00507F8894C8	192.168.15.52	608	Thu Mar 1 20:43:16
1939	Upload	3	Vigor_00507F8894C8_52	00507F8894C8	192.168.15.52	218	Thu Mar 1 20:31:36
1938	Upload	3	Vigor_00507F8894C8_52	00507F8894C8	192.168.15.52	217	Thu Mar 1 20:16:33
1937	Upload	3	Vigor_00507F8894C8_52	00507F8894C8	192.168.15.52	216	Thu Mar 1 20:01:30
1936	Upload	3	Vigor_00507F8894C8_52	00507F8894C8	192.168.15.52	215	Thu Mar 1 19:46:27
1935	Upload	3	Vigor_00507F8894C8_52	00507F8894C8	192.168.15.52	214	Thu Mar 1 19:31:24
1934	Upload	3	Vigor_00507F8894C8_52	00507F8894C8	192.168.15.52	213	Thu Mar 1 19:16:22

100%

Provisioning screen

The screenshot displays the DrayTek VigorACS provisioning interface. The top header features the DrayTek logo on the left and the VigorACS logo on the right, with the tagline "Your reliable networking solutions partner" below it. A red navigation bar on the left contains the "Essentials" menu, which is expanded to show a tree view of settings categories: Global Setting, Firmware Upgrade, Backup, Restore, Provision Setting, and Global Parameters. The "Global Parameters" category is selected and highlighted in blue. The main content area, titled "GlobalParameterPanel", shows a table of parameters. The table has three columns: "Id", "Name", and "IsKeep". The second row is highlighted in blue. Above the table, there is a toolbar with icons for adding, deleting, and refreshing, along with a "UserGroup" dropdown menu set to "RootGroup" and a "1/1" indicator. At the bottom of the interface, there is a red bar with various system icons and a zoom level of 100%.

Id	Name	IsKeep
1	Empty	NO
2	SET_ALL_2820	NO
3	Set_ALL_2830	YES
4	all router	NO

# Mass Backup/Restore

**DrayTek** VigorACS  
Your reliable networking solutions partner

**Essentials**

- Networks and Devices
- Wizards
  - Configuration
    - Backup
    - Restore
  - Firmware
    - Firmware upgrade
- Reports
- Inventory Monitor

Search Device

**FirmwareUpgradeWizard**

Model name: [ ] Modem version: [ ]

File: ./RootGroup/v2820\_v337\_232201\_A.all

Upgrade time:  Now  Schedule

Start day: 2012-02-27 Start time(HH:MM): 00 : 00

End time(HH:MM): 23 : 59

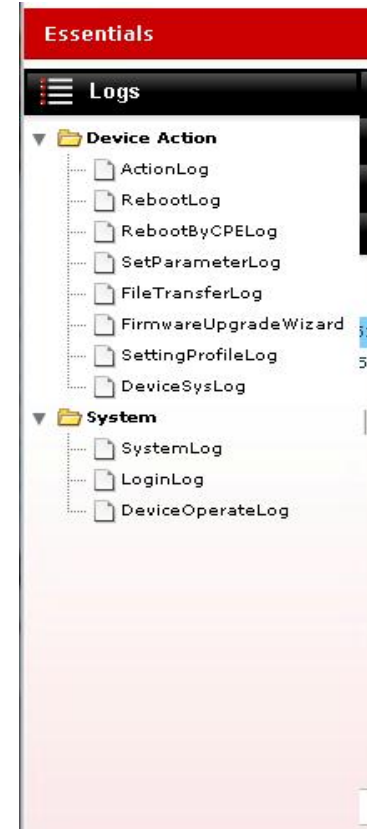
Select devices:

Name	Model name	Firmware version	Modem version	Upgrade
Network View(4)				<input type="checkbox"/>
SEG_Tech_Departm				<input type="checkbox"/>
PTC_2820(2)				<input type="checkbox"/>
Vigor_00507F	Vigor2820n	3.3.7_232201	232201_A Annex_A	<input checked="" type="checkbox"/>
Vigor_00507F	Vigor2820n	3.3.7_232201	232201_A Annex_A	<input type="checkbox"/>
PTC_2830(1)				<input type="checkbox"/>
PTC_AP800(1)				<input type="checkbox"/>

Apply

100%

## Reports & Logs





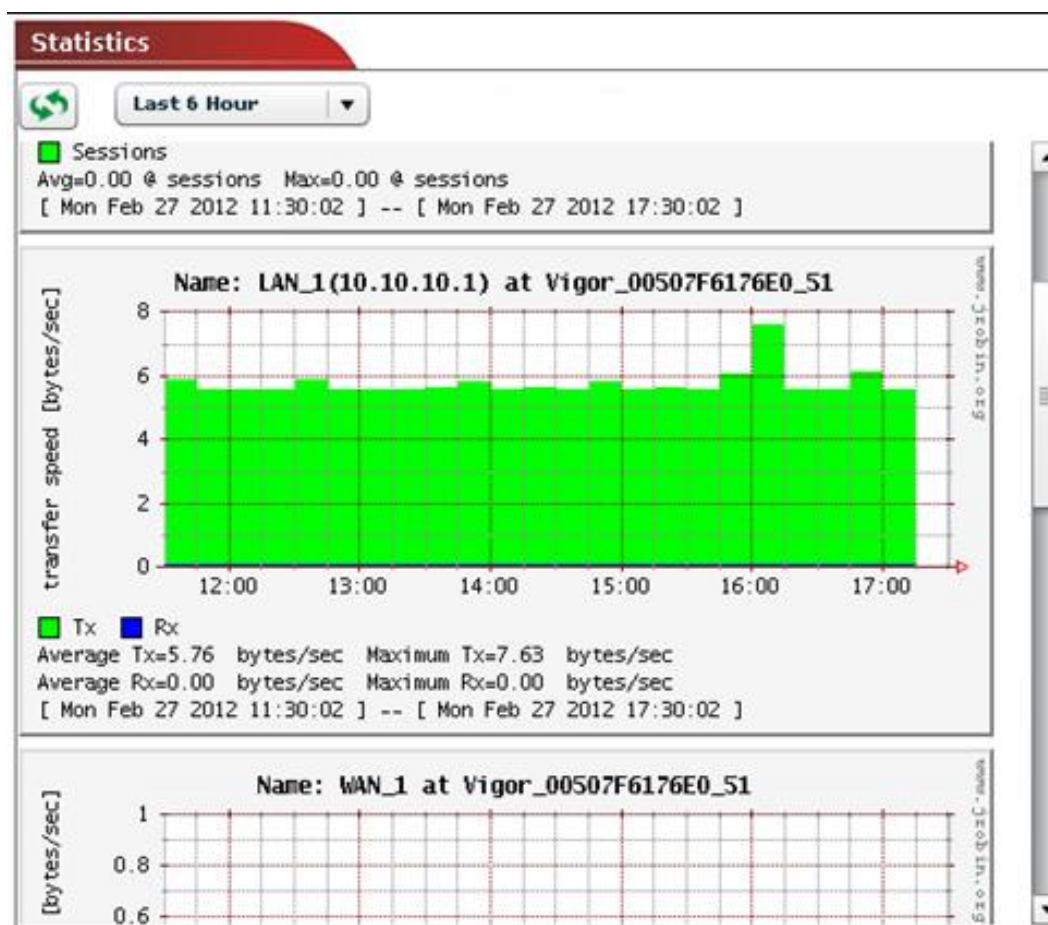
# Copy parameters from one device to another or many

The screenshot displays the VigorACS web interface for configuring parameter copying. The top navigation bar includes tabs for Device, System, LAN, WAN, VPN, Wireless, and Wireless\_5G. The left sidebar contains a menu with options like Device system log, Firmware status, Statistics, Ping/TraceRoute, Firmware upgrade, and Copy parameters. The main content area shows the 'Copy parameters' configuration page with fields for 'Copy time' (Now or Schedule), 'Start day' (2012-03-02), and 'Start time' (00:00). Below these fields is a table for selecting devices to copy parameters to.

Name	Model name	Firmware version	Modem version	Copy
Network View(4)				<input type="checkbox"/>
SEG_Tech_Department(4)				<input type="checkbox"/>
PTC_2830(2)				<input type="checkbox"/>
Vigor_00507F6176	Vigor2820n	3.3.7_232201	232201_A Annex_A	<input type="checkbox"/>
Vigor_00507F8B9C	Vigor2820n	3.3.7_232201	232201_A Annex_A	<input checked="" type="checkbox"/>
PTC_2830(1)				<input type="checkbox"/>
PTC_AP800(1)				<input type="checkbox"/>



## Time graphs of throughput, activity, sessions etc.



**DrayTek ACS-SI is priced 'per node' on an annual rolling subscription (a 'node' is one router).**

**For more details, pricing or a demonstration,  
Please visit [www.draytek.co.uk](http://www.draytek.co.uk)  
or speak to your distributor.**

---

**End of Presentation**